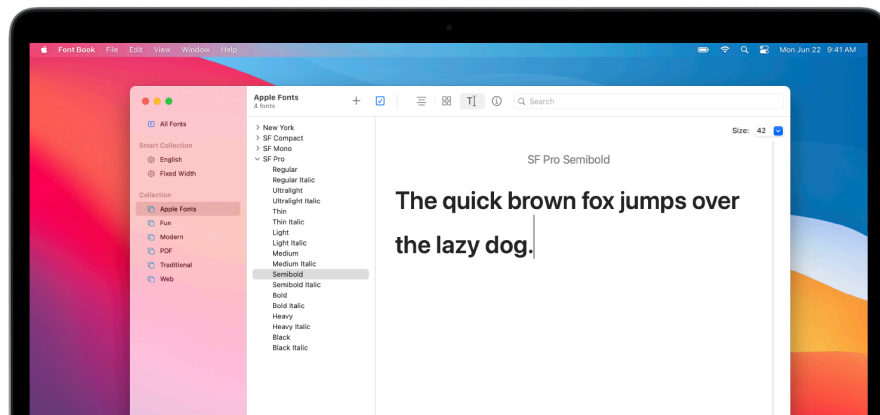


How to install SF Pro Font

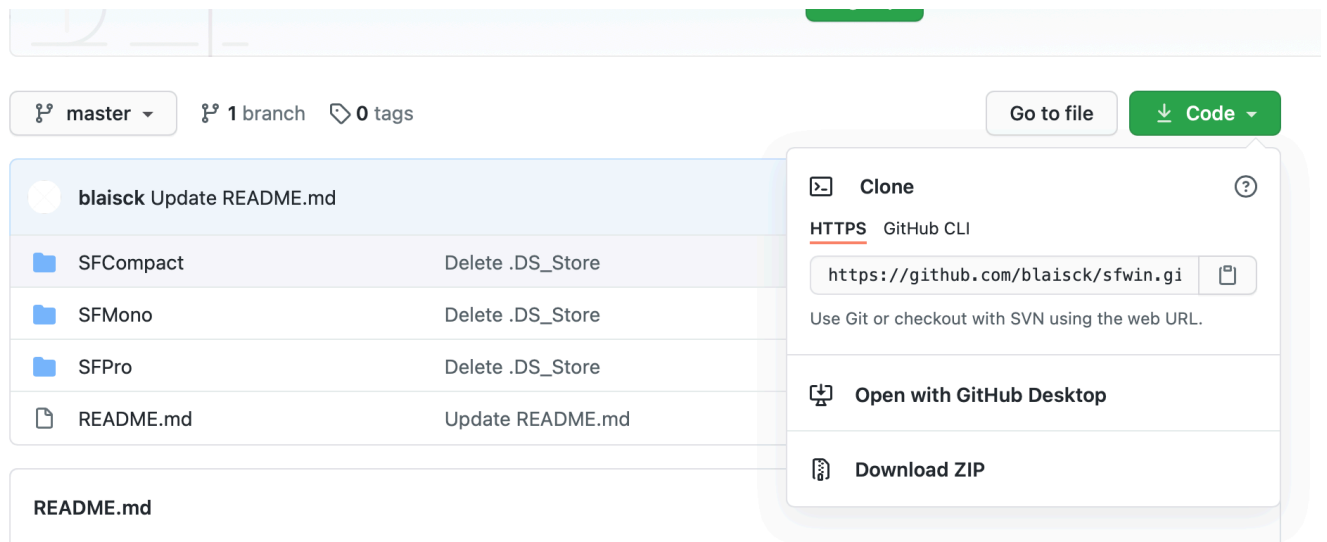
Fonts for Apple Platforms

Get the details, frameworks, and tools you need to use system fonts for Apple platforms in your apps. These typefaces offer the control and flexibility to optimally display text at a variety of sizes, in many different languages, across multiple interfaces.



Please follow the next steps:

1. Visit website: <https://github.com/blaisck/sfwin> Press code button and download .zip files



2. Unarchive all files SF Pro, SF Compact, SF Mono

3. You need to install all files .ttf from 3 folders, follow video instructions: <https://youtu.be/OlpVKUpaa0>

master

sfwin / SFPro / TrueType /

Go to file

blaisck update to latest version

f94ab25 on 25 Apr 2018 History

..

📄

SFProDisplay-Black.ttf

update to latest version

3 years ago

📄

SFProDisplay-BlackItalic.ttf

update to latest version

3 years ago

📄

SFProDisplay-Bold.ttf

update to latest version

3 years ago

📄

SFProDisplay-BoldItalic.ttf

update to latest version

3 years ago

📄

SFProDisplay-Heavy.ttf

update to latest version

3 years ago

📄

SFProDisplay-HeavyItalic.ttf

update to latest version

3 years ago

📄

SFProDisplay-Light.ttf

update to latest version

3 years ago

📄

SFProDisplay-LightItalic.ttf

update to latest version

3 years ago

master

sfwin / SFMono / TrueType /

Go to file

blaisck Add SFMono

50b5621 on 4 Feb 2019 History

..

📄

SFMono-Bold.ttf

Add SFMono

2 years ago

📄

SFMono-BoldItalic.ttf

Add SFMono

2 years ago

📄

SFMono-Heavy.ttf

Add SFMono

2 years ago

📄

SFMono-HeavyItalic.ttf

Add SFMono

2 years ago

📄

SFMono-Light.ttf

Add SFMono

2 years ago

📄

SFMono-LightItalic.ttf

Add SFMono

2 years ago

📄

SFMono-Medium.ttf

Add SFMono

2 years ago

📄

SFMono-MediumItalic.ttf

Add SFMono

2 years ago

📄

SFMono-Regular.ttf

Add SFMono

2 years ago

📄

SFMono-RegularItalic.ttf

Add SFMono

2 years ago

📄

SFMono-Semibold.ttf

Add SFMono

2 years ago

📄

SFMono-SemiboldItalic.ttf

Add SFMono

2 years ago

master

sfwin / SFCompact / TrueType /

Go to file

blaisck update to latest version

f94ab25 on 25 Apr 2018 History

..

📄

SFCompactDisplay-Black.ttf

update to latest version

3 years ago

📄

SFCompactDisplay-Bold.ttf

update to latest version

3 years ago

📄

SFCompactDisplay-Heavy.ttf

update to latest version

3 years ago

📄

SFCompactDisplay-Light.ttf

update to latest version

3 years ago

📄

SFCompactDisplay-Medium.ttf

update to latest version

3 years ago

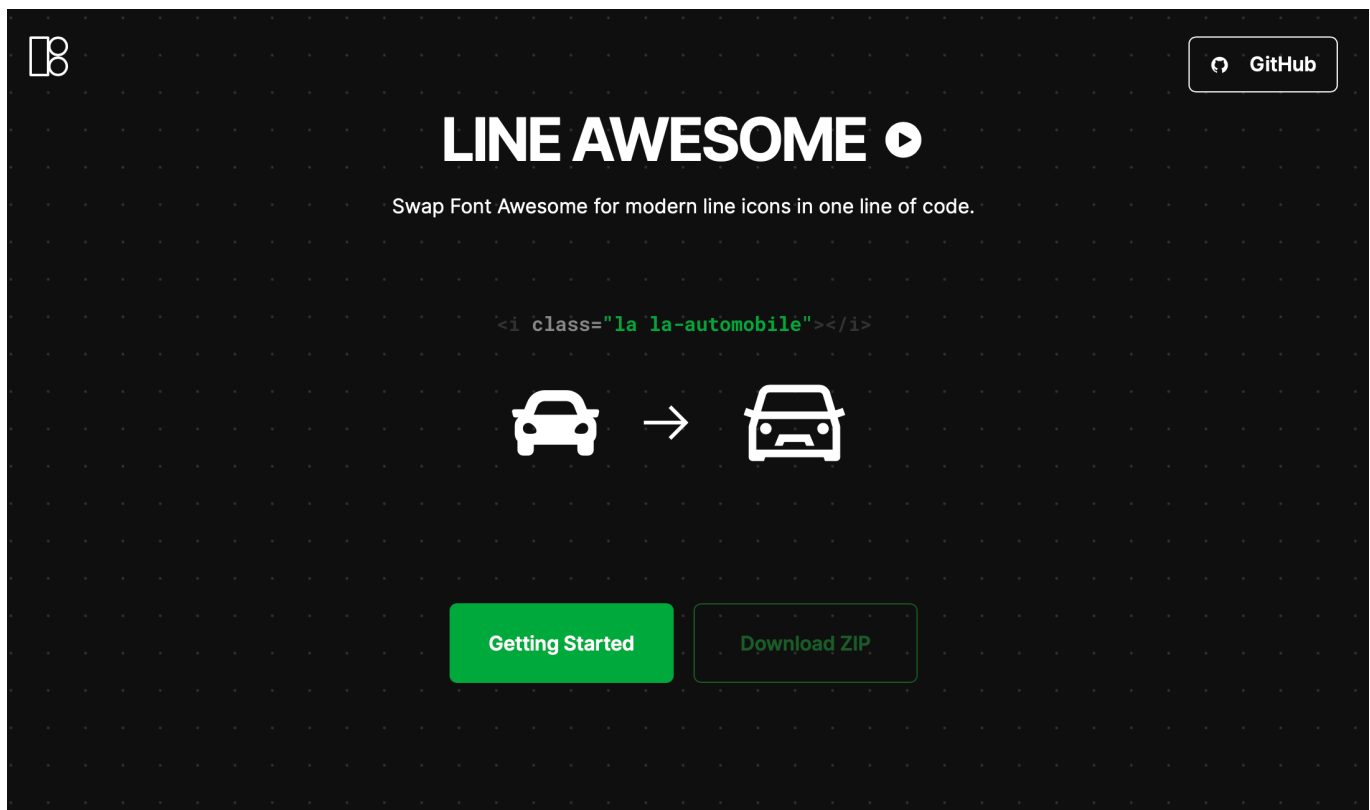
📄

SFCompactDisplay-Regular.ttf

update to latest version

3 years ago

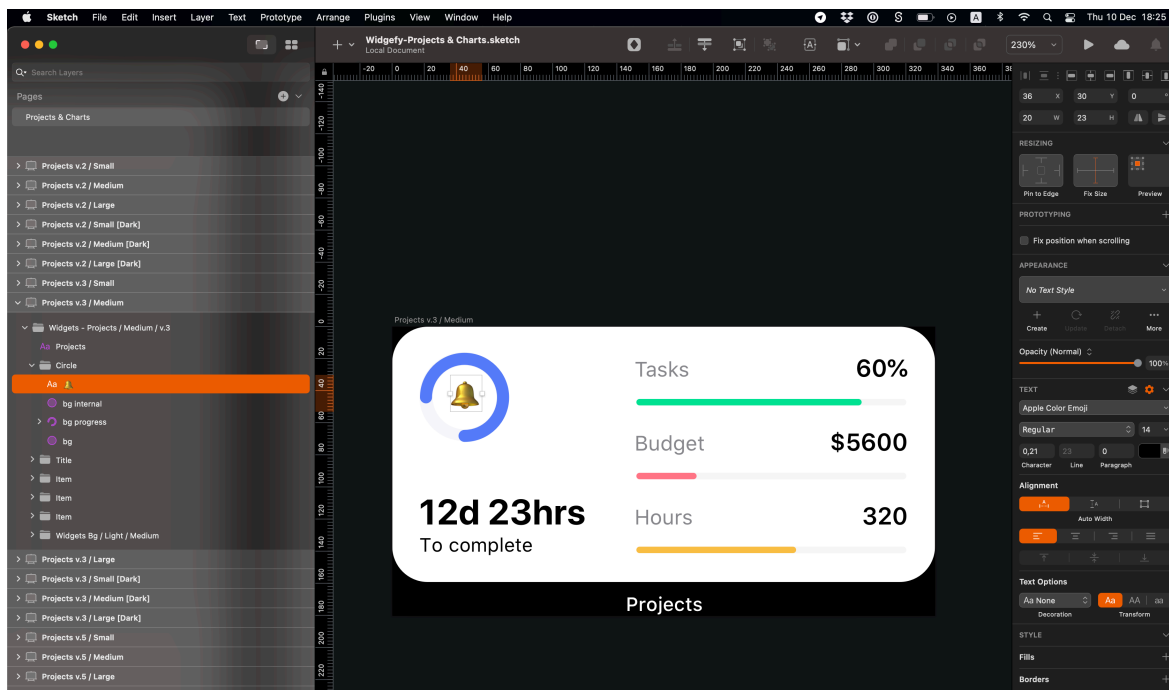
How to install Line Awesome Icon Font



Please follow the next steps:

1. Go to: <https://icons8.com/line-awesome>
2. Navigate to Download section
3. Download files <https://maxst.icons8.com/vue-static/landings/line-awesome/line-awesome/1.3.0/line-awesome-1.3.0.zip>
4. Extract files from archive
5. Navigate to the folder 'Fonts'
6. Install font files 'la-brands-400.ttf / la-regular-400.ttf / la-solid-900.ttf'
7. How to Install video <https://youtu.be/OlpVKUpraao>
8. Open / Restart your graphics editor and select missing fonts if needed

How to insert or replace Apple icon font symbols



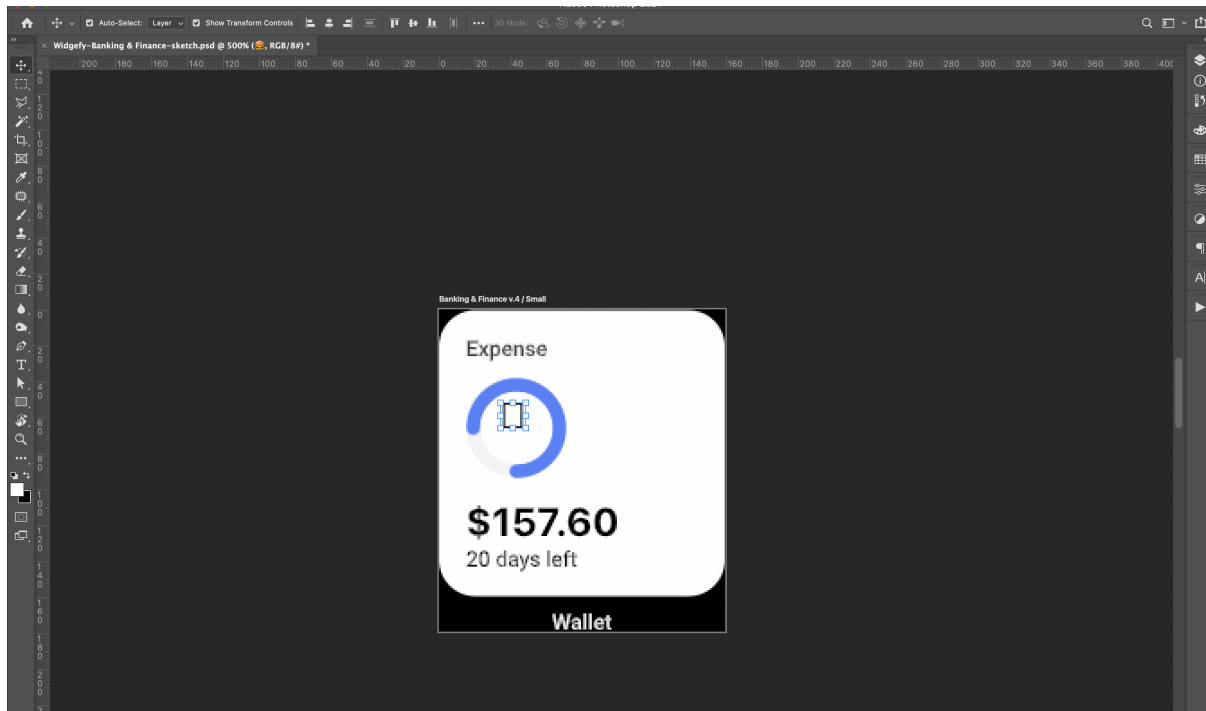
We used the default Mac OS and iOS system icon font “Apple Color Emoji” unfortunately this icon font is not compatible with the Windows-based system, this is why you will need to install a compatible icon font to substitute missing symbols.

Please follow the next steps:

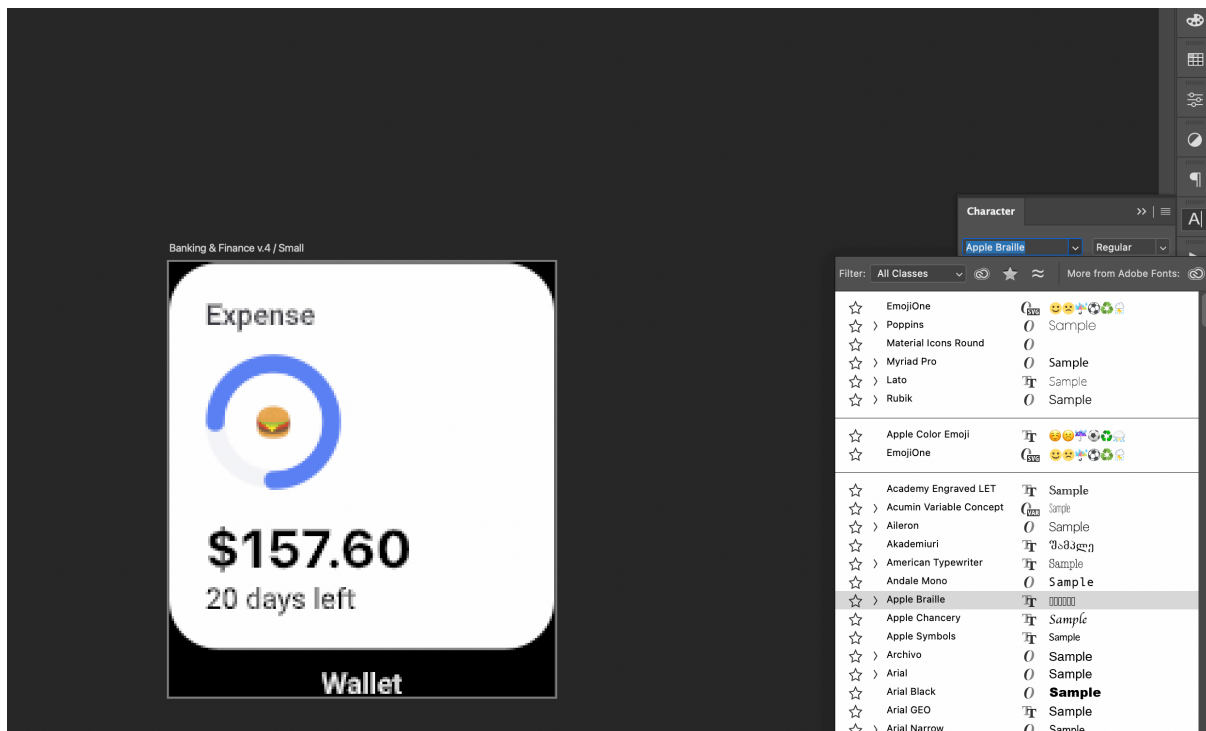
1. Visit website: <https://github.com/DeeDeeG/noto-color-emoji-font> and download .zip files
2. Direct download link: <https://github.com/DeeDeeG/noto-color-emoji-font/releases/download/v1.2-nougat/NotoColorEmoji-SVGinOT-1.2.zip> and unarchive files



3. You need to install .ttf file, follow video instructions: <https://www.youtube.com/watch?v=5YljoO2oFrw>
4. Open document in any compatible graphics editor
5. Select missing icon layer

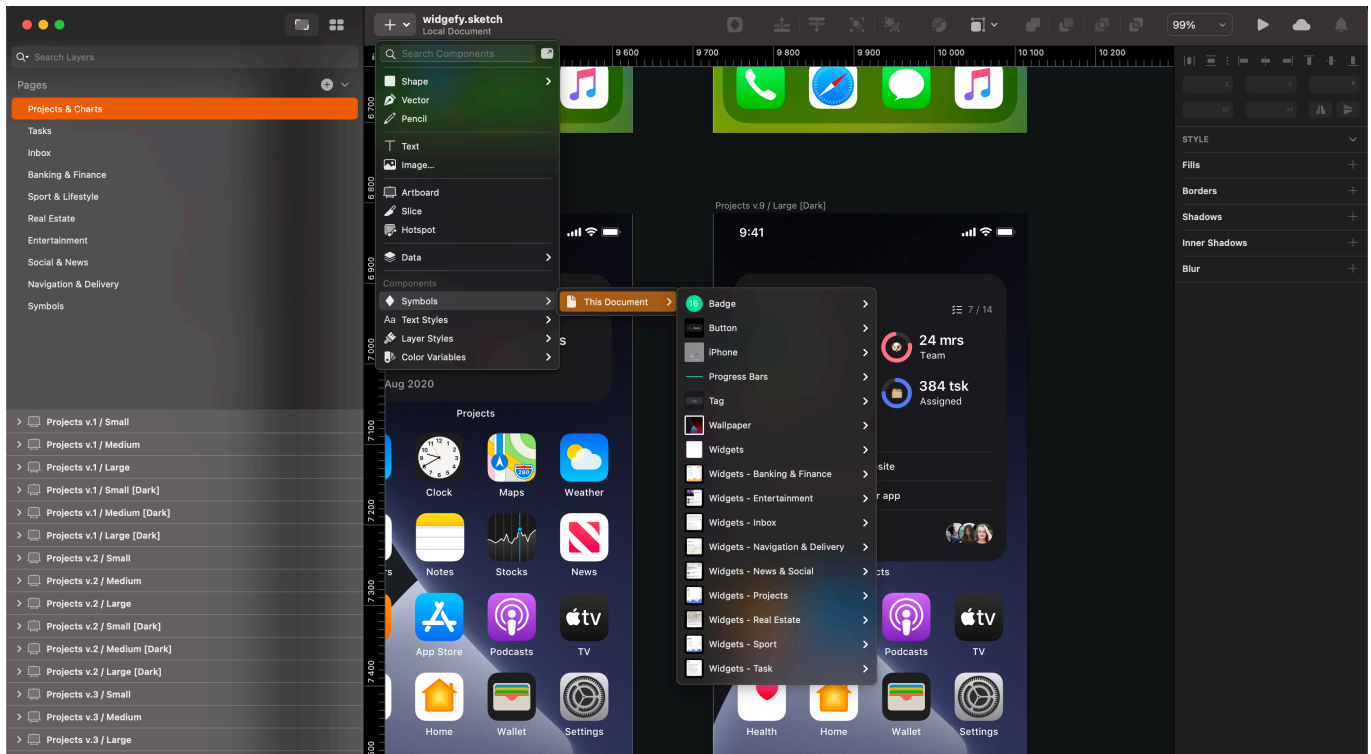


6. Change font to “EmojiOne” or “Noto Color Emoji” in the Type panel font’s name can be different according to your system or editor version and type.



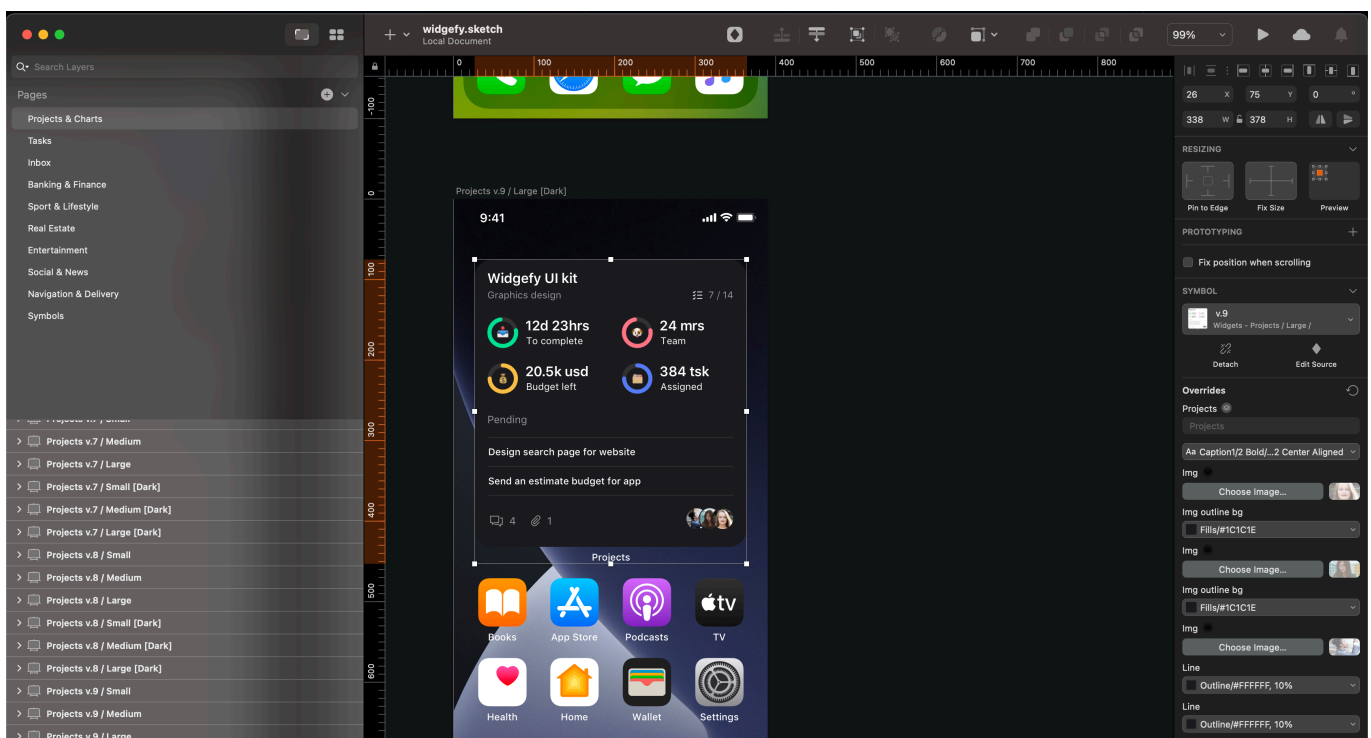
How to use this template

1. Insert Global symbol



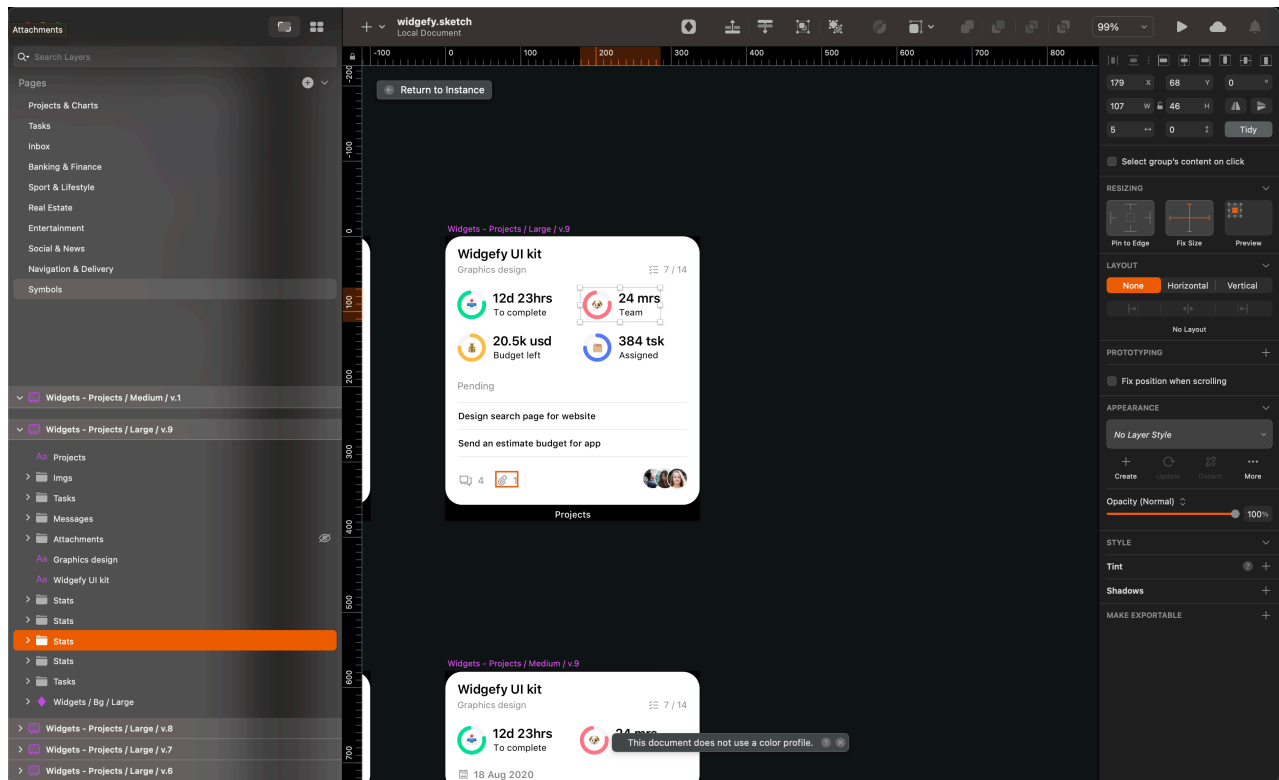
We created a library with lots of global objects that you can use in your project. To use them go to: Insert > Document > [Symbol Name]

2. Add or change symbols data



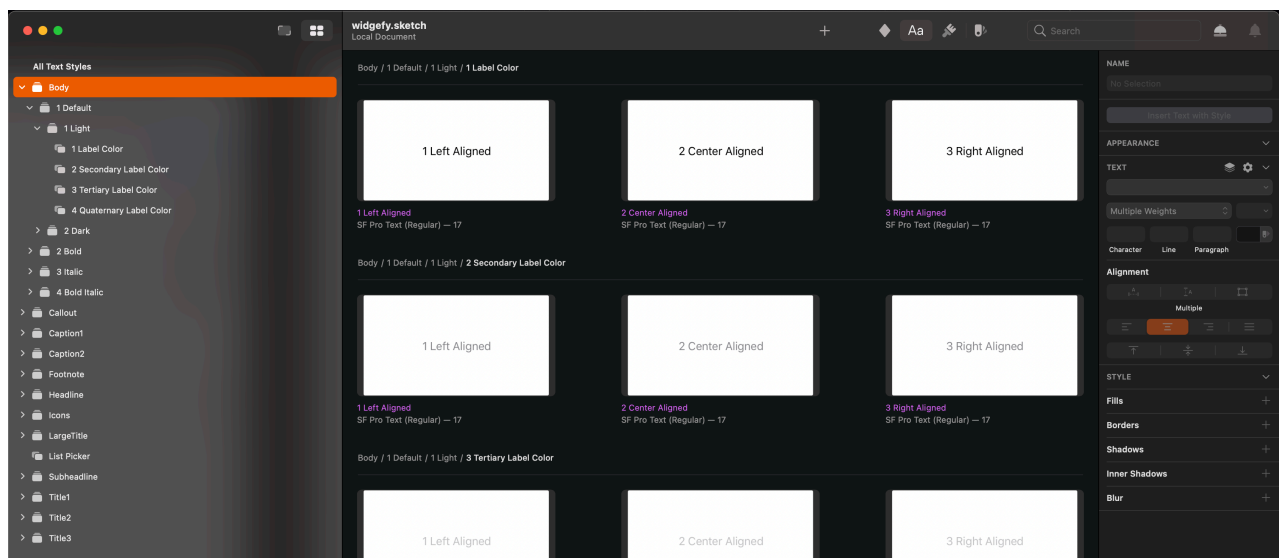
Symbol override panel allows to change and add your custom data to any symbols. Also, you can change global font styles for icons and text elements for pre-made styles.

3. Edit symbols



You can edit any of the instances at the symbols sections. Changes will modify this object globally on the entire document.

4. Edit font styles



Open components tab and select font style. You can change all styles (size, color, font type) in the right panel

5. Edit fills and layer styles

